

The most *economical* Solid-State TDR offered from ATC, the 329A on-delay TDR with plug-in base maintains excellent repeat accuracy despite wide voltage and temperature variations. A choice of eight fixed ranges are available from 0.3 seconds to 3 minutes.

**PRICE/PERFORMANCE VALUE:** The economical 329A is the *lowest cost* TDR ever offered by ATC. Ruggedly designed into a 36 x 36 mm housing, the 329A On-Delay TDR combines both *highly accurate* and *repeatable timing* with industrial quality that is usually found in only the more expensive timers.

**CHOICE OF RANGES:** The 329A is offered in a choice of eight different fixed ranges between 0.3 seconds to 3.0 minutes to permit optimum setting accuracy. The dial face clearly displays the range.

**DESIGNED FOR INDUSTRIAL SERVICE:** The 329A incorporates features designed to ensure a long trouble-free life expectancy, even in difficult industrial environments: high impact resistant housing with octal plug-in base that is easily surface/DIN or panel mounted; a DPDT 5 amp relay rated for 10 million operations at no load; and an oscillator-based timing circuit for *high accuracy* even with changes in temperature and voltage.

**HIGH ACCURACY:** The 329A's timing circuit is not a simple RC circuit, but it utilizes the sophistication of a proprietary integrated circuit that includes counting technology along with a stable oscillator to provide repeatable time delays. Timing begins when the start switch is closed. This starts an oscillator which runs at a frequency determined by the time setting. A fixed number of counts from the oscillator determines the end of the time cycle. The time required to accomplish this depends on the oscillator frequency.

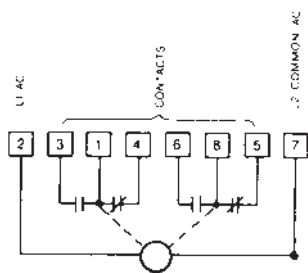


Economical Time Delay Relay

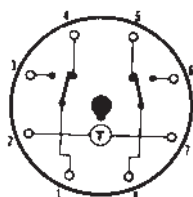
**OPERATION**

At time out, the built-in relay transfers its contacts. These contacts remain transferred until the start switch is opened or power is removed by some other means. The 329A then resets and is ready for another cycle.

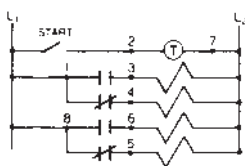
**WIRING**



TYPICAL CIRCUIT



ON-DELAY  
TERMINAL WIRING



ON-DELAY

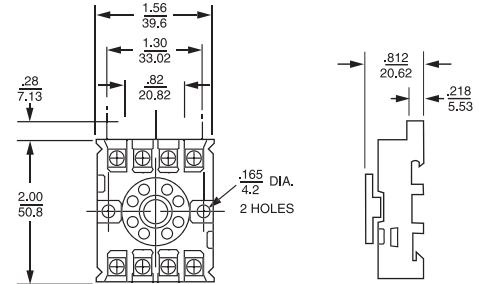
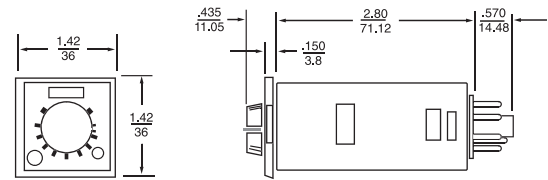
MODEL NUMBER >>>>>>	329A	Q	
Range			
0.3 SEC	361		
1 SEC	362		
3 SEC	363		
5 SEC	364		
10 SEC	365		
30 SEC	366		
1 MIN	367		
3 MIN	368		
special	000		
Voltage & Frequency		Q	
120 VAC, 50/60 Hz			
Arrangement			
On Delay	10		
Special, use K in features	00		
Features			
Standard	X		
Special	K		

Time Delay Relays // 329A Series

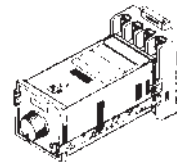
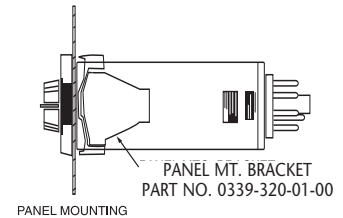
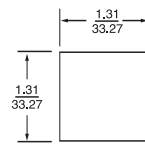
## SPECIFICATIONS

RANGE	Choice of 8 fixed ranges	
	0.3 SEC	10.0 SEC
	1.0 SEC	30.0 SEC
	3.0 SEC	1 MIN
	5.0 SEC	3 MIN
MINIMUM SETTING	5% of range, plus 50 mSEC on 0.3, 1.0, and 3.0 SEC ranges.	
LOAD RELAY	TYPE	DPDT 5 Amps resistive at 30 VDC or 240 VAC (or less) 1/8 HP @ 120 VAC 1/4 HP @ 240 VAC 240 VA @ 240 VAC
	LIFE	100,000 operations at full load: 5 A at 30 VAC (or less) resistive 5 A at 240 VAC (or less) resistive 10 million operations with no load
	CONTACT MATERIAL	Silver Cadmium Oxide
TEMPERATURE RATING	0° to 131°F (-17° to 55° C)	
MOUNTING	Plug-in octal base; mounts in any position with retaining clips.	
	OPTIONS: Surface mounting socket DIN rail mounting socket Panel-mounting adapter kit Plug-on socket Rear facing terminal socket	
POWER REQUIREMENTS	95 to 132 VAC, 50/60 Hz Running - 0.02 A	
SETTING ACCURACY	± 15%	
REPEAT ACCURACY	Varies as a function of line voltage and temperature but not of reset time	
	a	±2.0 at constant voltage, and full temperature range. (or ±25 mSEC, whichever is greater)
	b	±1.5%* at constant temperature and full voltage range. (or ±25 mSEC, whichever is greater)
	c	±3.5%* over full voltage and temperature range. (or ±30 mSEC, whichever is greater). Variations of line and voltage must be within 95 and 132V; of temperature between -17 and 55C (0 and 131F)
*Variation from average actual time		
MODE OF OPERATION	All models operate in ON-delay mode only	
RESET TIME	a	0 to 20 mSEC power interruption; guaranteed no reset
	b	20 mSEC to 100 mSEC; it may reset. (40 mSEC typical reset)
	c	Over 100 mSEC guaranteed to reset
WEIGHT	0.2 lbs.	

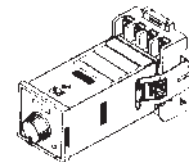
## DIMENSIONS (INCHES/MILLIMETERS)



8 PIN OPTIONAL OCTAL SOCKET NO. 00008258500



00008258500 SOCKET WITH 0339-025-03-00 HOLDDOWNS



TYPICAL OTHER SOCKET WITH 0339-025-02-00 HOLDDOWNS